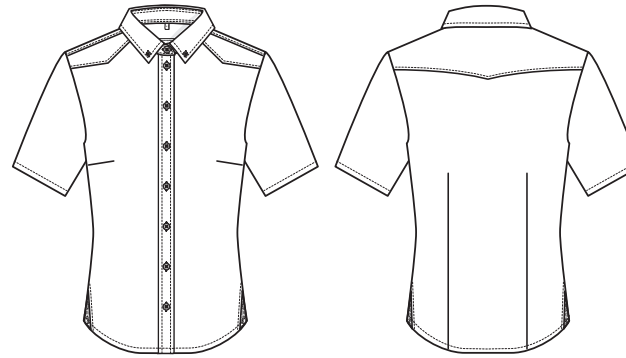


# SERVICE HEMDEN/BLUSEN



STYLE  
6535



NEU

## GERMAN

### DAMEN-BLUSE

- Regular Fit
- Kurzarm
- Armumschlag im Kontrast
- Button-Down-Kragen
- Seitlicher Kontrasteinsatz
- **GRÖSSEN:** 32-52

## ENGLISH

### LADIES BLOUSE

- regular fit
- short sleeve
- arm turn-up in contrast
- button-down collar
- side contrast insert
- **SIZES:** 32-52

## FRENCH

### CHEMISIER FEMME

- Regular fit
- Manches courtes
- Revers de manche contrasté
- Col à pointes boutonnées
- Empiècement latéral contrastante
- **TAILLES :** 32-52

## DUTCH

### DAMES BLOUSE

- regular fit
- korte mouw
- mouwomslag met contrasterende stof
- button-down kraag
- contrastafwerking aan de kant
- **MAAT:** 32-52

NR: 6535.6940.020 FLOWER DENIM

NO: 6535.6940.020 FLOWER DENIM

RÉF : 6535.6940.020 DENIM FLORAL

NR: 6535.6940.020 DENIM GEBLOEMD

**GEWEBE:** 100% Baumwolle, 136 g/m<sup>2</sup>

**FABRIC:** 100% cotton, 136 g/m<sup>2</sup>

**TEXTILE :** 100 % coton, 136 g/m<sup>2</sup>

**DOEK:** 100% katoen, 136 g/m<sup>2</sup>

**PFLERGE:**

**CARE:**

**ENTRETIEN :**

**ONDERHOUD:**

